

# / BROKK DESCALER

The Brokk Descaler is a new product to the Brokk range, initially developed to avoid hazardous descaling in the preheater tower in the cement industry but turned out to be ideal for any vertical vessel in the processing industry. The product evolved from the Brokk robot into a new solution with a telescopic boom for outstanding reach and remote-controlled maneuvering. Hundreds of tons of overhead refractory can be removed with zero physical contact and at a much faster pace than doing the same task manually. The Brokk Descaler comes in a single and a twin version that allows for descaling in vessels up to 9.5 m in diameter.

- Eliminate the risk of falling debris for workers.
- Improve production capacity by reducing shutdown time
- Minimize exposure to dust for workers
- Installation in less than 3 hours



Hydraulic breaker in illustrations: BHB 55  
Load and stability diagram available on request



## TECHNICAL DATA

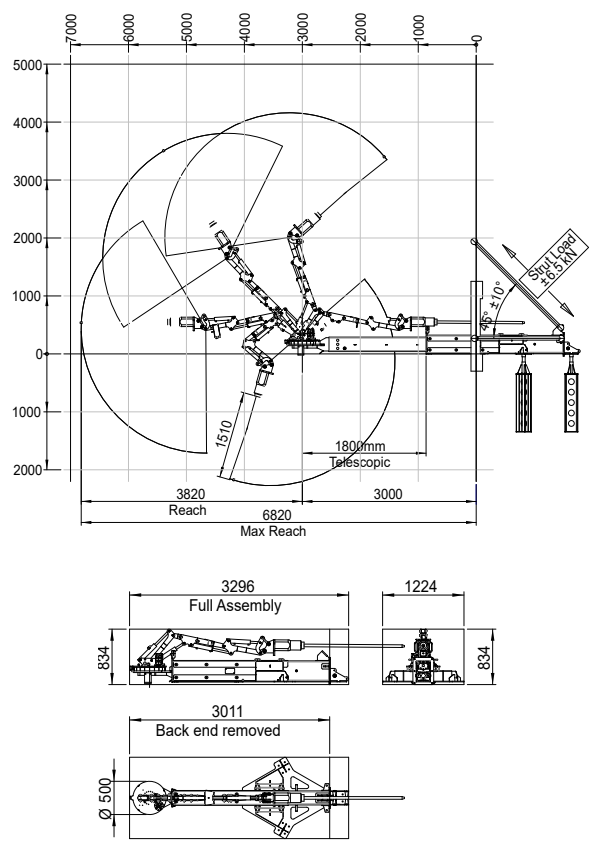
<b>Slewing speed</b>	18 sec/360°
<b>Transport speed, max.</b>	2.7 km/h; 1.7 mph
<b>Climbing inclination, max.</b>	30°
<b>Hydraulic system capacity</b>	27 l; 7.1 US gal
<b>Pump type</b>	Variable load-sensing
<b>System pressure</b>	18 MPa; 2611 psi
<b>Pump flow 50 Hz</b>	27 l/min; 7 US gal/min
<b>60 Hz</b>	32 l/min; 8 US gal/min
<b>Power technology</b>	SmartPower™
<b>Electric motor type</b>	ABB
<b>Power*</b>	9.8 kW
<b>Recommended fuse size*</b>	16 A
<b>Starting device</b>	Direct start
<b>Control type</b>	SmartRemote™, portable
<b>Signal code</b>	Digital
<b>Transfer</b>	Professional radio/ Cable
<b>Range, radio</b>	Up to 300 m
<b>Machine weight**</b>	<b>Single</b> 743 kg; 1630 lbs
	<b>Twin</b> 900 kg; 1984 lbs
<b>Power pack</b>	390 kg; 859 lbs
<b>Recommended attachment weight</b>	80 kg; 175 lbs
<b>Sound power level L<sub>WA</sub>***</b>	90 dB(A)

\*Valid for 400 V/50 Hz and 440 V/60 Hz

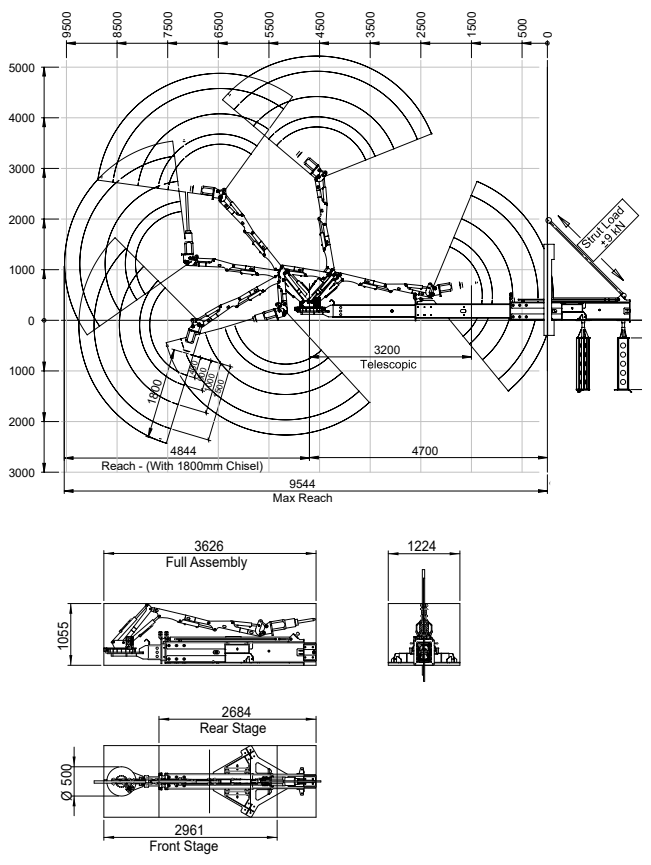
\*\*Excluding attachment and extra equipment

\*\*\*Measured according to directive 2000/14/EC

## SINGLE



## TWIN



Tolerances for technical data may vary